

SVEZA BIRCH PLYWOOD

PRODUCTS
AND APPLICATIONS

WWW.SVEZA.COM



The world leader in birch plywood
production



SVEZA IS THE WORLD LEADER IN BIRCH PLYWOOD PRODUCTION

SVEZA group is a Russian company, the world leader in the birch plywood market. SVEZA products have earned customer loyalty in 80 countries across the world. They are used in high-rise building and Olympic venue construction, long-haul trailer and high-speed train production, and eco-friendly furniture and trendy interior design.

The company is on the Russian market since 1998. Along the way, SVEZA has upgraded its production with the cutting edge technology and equipment. SVEZA Group's annual production is 1,4 million m³.

SVEZA is committed to responsible use of forest resources, which is confirmed by international FSC™ certificates.

FSC (Forest Stewardship Council®) is an independent, non-governmental, not-for-profit organization established to promote the responsible management of the world's forests.

SVEZA IN FIGURES



1 461 000 m³
of wood boards annually



100%
birch veneer



200+
sizes and thicknesses



80
purchasing countries



7
mills

SVEZA – 100% BIRCH PLYWOOD



Exceptional durability



Hard surface



Unique load capacity



Keeps its properties through a temperature range of -40°C to +50°C (-40°F to +122°F)



Attractive wood texture



Easy handling

SVEZA REGULAR INTERIOR

SVEZA Regular Interior is a high-quality construction material with excellent durability and a good-looking surface. SVEZA Regular Interior plywood is easy to work with, and goes perfectly well with finish materials. It is water resistant, however it is not recommended for use with exterior finishes. This material is ideal for interior use and the manufacturing of furniture parts and toys.



KEY BENEFITS

- 01 **Hard surface**
- 02 **Good-looking surface**
- 03 **Exceptional durability and wear-resistance**
- 04 **Comes in a variety of thicknesses and sizes**

TECHNICAL SPECIFICATIONS

Standard sizes, length x width, mm (ft)	1525x1525 (5x5) 2440/2500x1500/1525 (8x5)
Thickness, mm	3-25
Face veneer grades	I (B, S), II (BB), III (CP), IV (C)
Surface type	Outer layers sanded (S2S), one side sanded (S1S), unsanded (NS)
Formaldehyde emission class	E1
Water resistance	Normal
Density, kg/m³	640-700
Moisture content, %	5-14
Edge sealing	—

Produced under **STO 52654419-001-2018 GENERAL PURPOSE BIRCH PLYWOOD Technical Specifications.***

STRENGTH SPECIFICATIONS

DIMENSION	THICKNESS, MM	VALUE
Ultimate static bending strength, min MPa	along the grain of face veneers	45
	against the grain of face veneers	30
Ultimate tensile strength along the grain, min MPa	3-8	30
Static bending elasticity modulus, min MPa	along the grain	5000
	against grain	3000

* For STO 52654419-001-2018 visit "Certificates" section of www.sveza.com website.

SVEZA REGULAR EXTERIOR

SVEZA Regular Exterior is a high-quality, 100% birch plywood with high durability and moisture resistance. SVEZA Regular Exterior maintains its performance characteristics under conditions of high humidity and does not deform or soak. It can be used in both interior and exterior finish.



KEY BENEFITS

- 01 Higher water-resistance
- 02 Exceptional durability and wear-resistance
- 03 Hard surface
- 04 Resistance to temperature variation -40 to +50 °C
- 05 Comes in a variety of thicknesses and sizes

TECHNICAL SPECIFICATIONS

Standard sizes, length x width, mm (ft)	1525x1525 (5x5) 1220x2440x1220 (4x8x4) 1250x2500x1250 (4x8x4) 1500/1525x2440/2500 (5x8) 2440/2500x1500/1525 (8x5) 1500/1525x3000/3050 (5x10)
Thickness, mm	4-40
Face veneer grades	I (B, S), II (BB), III (CP), IV (C)
Surface type	Outer layers sanded (S2S), one side sanded (S1S), unsanded (NS)
Formaldehyde emission class	E1
Water resistance	Higher
Density, kg/m ³	640-700
Moisture content, %	5-14
Edge sealing	—

Produced under STO 52654419-001-2018 GENERAL PURPOSE BIRCH PLYWOOD Technical Specifications.*

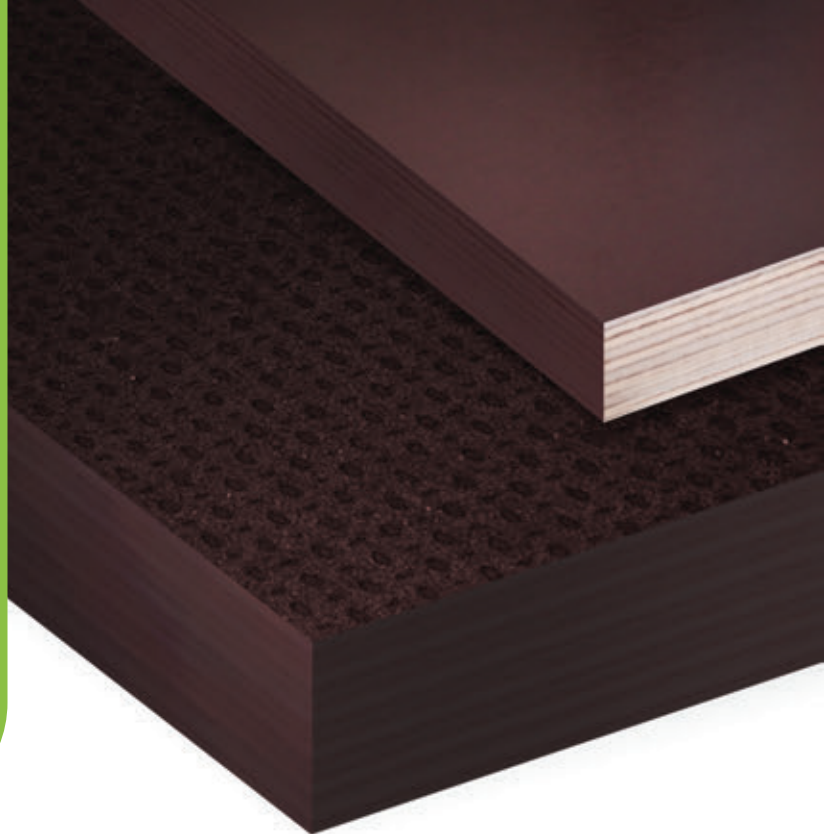
STRENGTH SPECIFICATIONS

DIMENSION	THICKNESS, MM	VALUE
Ultimate static bending strength, min MPa	along the grain of face veneers	60
	against the grain of face veneers	30
Ultimate tensile strength along the grain, min MPa	3-8	30
Static bending elasticity modulus, min MPa	along the grain	6000
	against grain	3000

* For STO 52654419-001-2018 visit "Certificates" section of www.sveza.com website.

SVEZA REGULAR FILM-FACED

SVEZA Regular Film-faced is a high-quality plywood covered with resin-treated paper that turns into a protective film during production. Because of this, the surface is resistant to water, wear, chemicals, fungi and mold. Film-faced plywood is durable against concrete, so it is widely used for panel formwork. Comes with a smooth or mesh surface. Edges are sealed with water-dispersible acrylic paint. Widely used in the construction industry and vehicle production. Easy to mount and work with.



KEY BENEFITS

- 01 **High wear resistance**
- 02 **Resistance to most aggressive environments, including chemicals**
- 03 **Maximum protection against slippage (film with wire mesh surface)**
- 04 **Higher water-resistance**
- 05 **Resistance to temperature variation -40 to +50 °C**
- 06 **Comes in a variety of thicknesses and sizes**

TECHNICAL SPECIFICATIONS

Standard sizes, length x width, mm (ft)	1220x2440x1220 (4x8x4) 1250x2500x1250 (4x8x4) 1500/1525x2440/2500 (5x8) 2440/2500x1500/1525 (8x5) 1500/1525x3000/3050 (5x10)
Thickness, mm	6-40
Surface type	Smooth (F/F), smooth/wire mesh (F/W)
Film density, g/m ²	120, 220
Formaldehyde emission class	E1
Water resistance	Higher
Density, kg/m ³	640-700
Moisture content, %	5-14
Edge sealing	Special waterproof acrylic based paint
Produced under STO 52654419-006-2018 FILM FACED BIRCH PLYWOOD Technical Specifications.*	

STRENGTH SPECIFICATIONS

DIMENSION	THICKNESS, MM	VALUE
Ultimate static bending strength, min MPa	along the grain of face veneers	60
	against the grain of face veneers	30
Ultimate tensile strength along the grain, min MPa	6-8	30
Static bending elasticity modulus, min MPa	along the grain	6000
	against grain	3000

* For STO 52654419-006-2018 visit "Certificates" section of www.sveza.com website.

SVEZA DECK 350

SVEZA Deck 350* is a special film-faced plywood with an easy-to-use grid pattern, designed for slab formwork. SVEZA Deck 350 comes with 25, 50 and 100 mm grid patterns. These types of lines simplify plywood marking and cutting, as well as rebar placement. This allows the reduction of labor costs at the construction site. The sides of SVEZA Deck 350 are coated with special acrylate-based paint with a high level of water resistance.



KEY BENEFITS

- 01 **100% birch plywood**
- 02 **Easy to cut and mark**
- 03 **Easy to put bars**
- 04 **Reduces work time and labor costs**
- 05 **Wear resistant surface**
- 06 **Moisture protection on the edges**
- 07 **Convenient packaging**

TECHNICAL SPECIFICATIONS

Standard sizes, length x width, mm (ft)	1220x2440x1220 (4x8x4) 1250x2500x1250 (4x8x4)
Thickness, mm	18, 21
Surface type	Smooth (F/F)
Film density, g/m ²	120
Wear resistance of the film, cycles in Taber abrasion test	350
Formaldehyde emission class	E1
Density, kg/m ³	640-700
Moisture content, %	5-14
Edge sealing	Water-based acrylic paint
Produced under STO 52654419-006-2018 FILM FACED BIRCH PLYWOOD Technical Specifications.**	

STRENGTH SPECIFICATIONS

DIMENSION		VALUE
Ultimate static bending strength, min MPa	along the outer layer grain	60
	across the outer layer grain	30
Static bending elasticity modulus, min MPa	along the grain	6000
	across the grain	3000

* Production process of plywood with layout grid is patented (registered in the Russian Federation National Register of Utility Models 20.01.15, patent #150519).

** For STO 52654419-006-2018 visit "Certificates" section of www.sveza.com website.

SVEZA OIL

SVEZA Oil is a multi purpose birch plywood for concrete work, with a moderate number of reuses (2–5 times)*. Produced with Oil Recycling Technology**. The edges of SVEZA Oil are protected from moisture with acrylic paint. The surface is coated with oil for ease of use. Oiling is executed in controlled conditions that guarantee smooth application. The product is suited for low-rise construction.



KEY BENEFITS

- 01 Even oiling of the surface
- 02 2-5 coating cycles
- 03 Multi-purpose basis for concrete work
- 04 Moisture protection on the edges with acrylic paint
- 05 Oil recycling technology
- 06 High strength properties

TECHNICAL SPECIFICATIONS

Standard sizes, length x width, mm (ft)	1500x750 2500x1250 2240x1220
Thickness, mm	15, 18, 21
Face veneer grades	CP/CP
Surface type	Not sanded
Oil type	Distillate oil
Glue type	Exterior (WBP)
Formaldehyde emission class	E1
Density, kg/m ³	> 450
Moisture content, %	5-12
Edge sealing	Acrylic paint. If panels are cut or drilled on site, edges and holes must be protected with a suitable paint.
Produced under STO 52654419-012-2018 SVEZA OIL HARDWOOD PLYWOOD Technical Specifications .***	

STRENGTH SPECIFICATIONS

DIMENSION		VALUE
Ultimate static bending strength, min MPa	along the outer layer grain	60
	across the outer layer grain	30
Static bending elasticity modulus, min MPa	along the grain	6000
	across the grain	3000

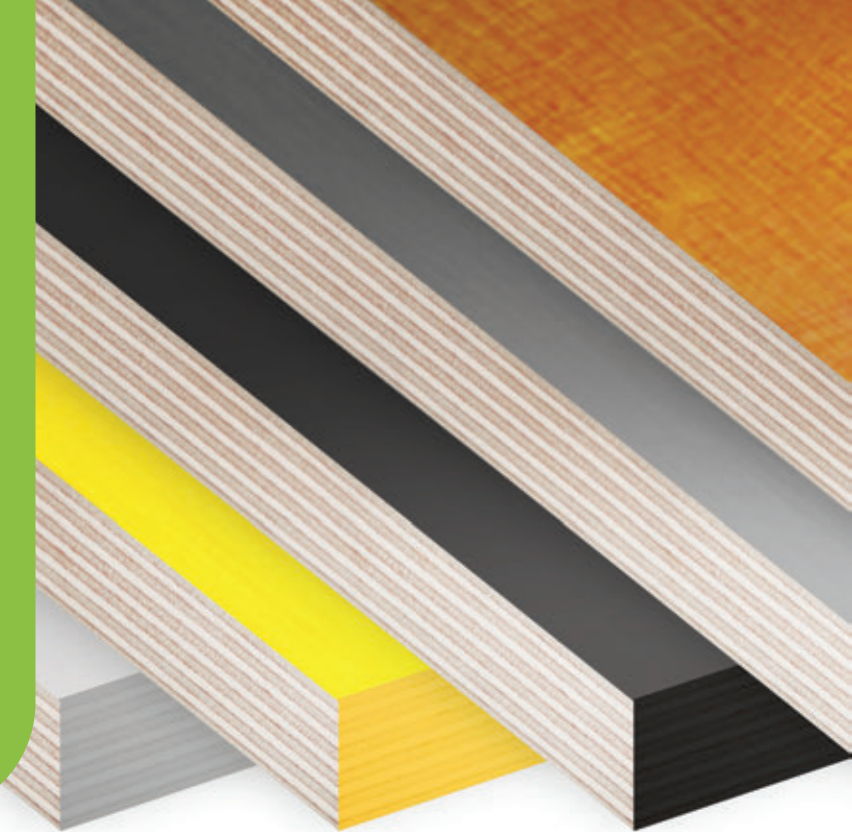
* The life of the product depends on how it is treated, cleaned, and stored.

** Product might be made with reprocessed oil.

*** For STO 52654419-012-2018 visit "Certificates" section of www.sveza.com website.

SVEZA COLOR

Film faced colored birch plywood ready for use. We offer SVEZA Paint in five colors: SVEZA Color Light Grey, SVEZA Color Stone Grey, SVEZA Color Yellow, SVEZA Color Light Brown, SVEZA Color Black. Suitable for both interior and exterior works. Comes in two surface types: smooth on 2 sides and smooth/mesh.



KEY BENEFITS

- 01 **100% birch plywood**
- 02 **Higher UV-stability**
- 03 **Higher wear resistance**
- 04 **WBP glue**
- 05 **Antislip properties (W/F)**

TECHNICAL SPECIFICATIONS

Standard sizes, length x width, mm (ft)	1220x2440/1250x2500 (4x8) 1500x3000/1525x3050 (5x10)
Thickness, mm	6–21 (thicknesses up to 40 mm available upon customer's request)
Surface type	Smooth/smooth (F/F), smooth/wiremesh (F/W)
Surface color (film density)	Light Grey (220 g/m ²) Stone Grey (174 g/m ²) Yellow (167 g/m ²) Light Brown (117 g/m ²) Black (125 g/m ²)
Formaldehyde emission class	E1
Glue type	Exterior (WBP)
Density, kg/m³	640-700
Moisture content, %	≤14
Edge sealing	Painted on request

Produced under STO 52654419-007-2018 SVEZA COLOR FILM FACED BIRCH PLYWOOD Technical Specifications.*

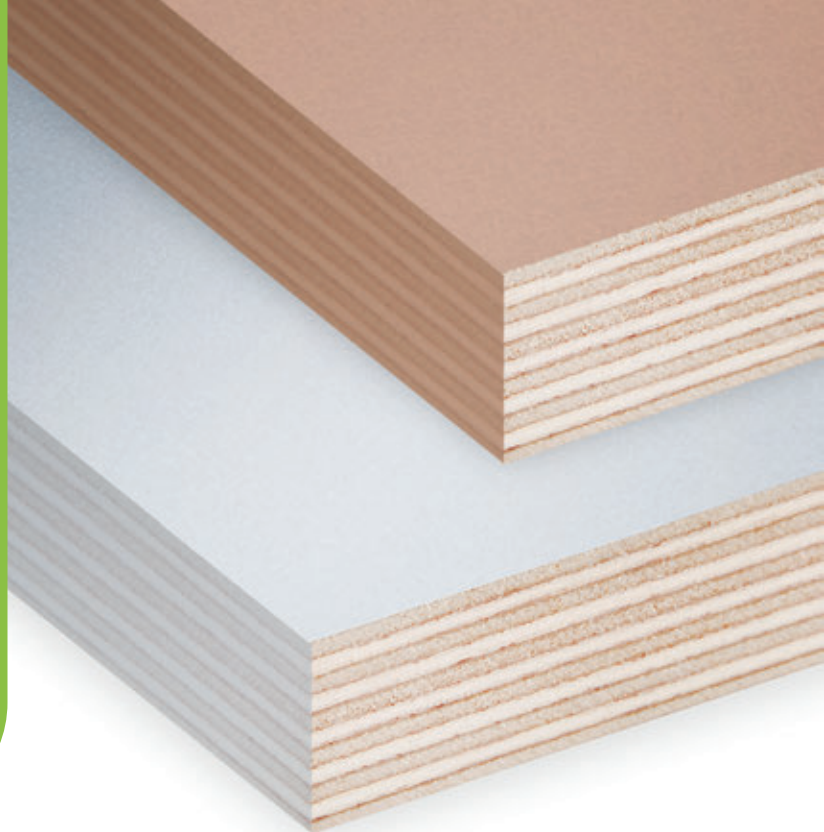
STRENGTH SPECIFICATIONS

DIMENSION	THICKNESS, MM	VALUE
Ultimate static bending strength, min MPa	along the grain of face veneers	60
	against the grain of face veneers	30
Ultimate tensile strength along the grain, min MPa	6-8	30
Static bending elasticity modulus, min MPa	along the grain	6000
	against grain	3000

* For STO 52654419-007-2018 visit "Certificates" section of www.sveza.com website.

SVEZA PAINT

SVEZA Paint is a 100% birch plywood, specially designed for painting. We offer SVEZA Paint in two colors: light brown and grey. SVEZA Paint Kraft can be used for both interior and exterior work, including the decoration of walls and facades, doors and furniture, vehicle bodies, and sports equipment. SVEZA Paint Kraft allows you to achieve a smooth, durable cover without cracking. SVEZA Paint Grey has a surface which is suitable for use as a base for any variety of colors.



KEY BENEFITS

- 01 **100% birch plywood**
- 02 **Work time cut by 70%***
- 03 **Min consumption of priming material**
- 04 **Smooth finish**
- 05 **Durable result with no cracking**
- 06 **Weather resistant (SVEZA Paint Grey)****

TECHNICAL SPECIFICATIONS

Standard sizes, length x width, mm (ft)	1220x2440/1250x2500 (4x8) 1500x3000/1525x3050 (5x10)
Thickness, mm	6–21 (thicknesses up to 40 mm available upon customer's request)
Surface type	Smooth/smooth (F/F)
Surface color (film density)	Grey (SVEZA Paint Grey (205 g/m ²)) Light brown (SVEZA Paint Kraft (214 g/m ²))
Formaldehyde emission class	E1
Glue type	Exterior (WBP)
Density, kg/m³	640-700
Moisture content, %	5-14
Edge sealing	Painted on request
Produced under STO 52654419-006-2018 FILM FACED BIRCH PLYWOOD Technical Specifications.***	

STRENGTH SPECIFICATIONS

DIMENSION		THICKNESS, MM	VALUE
Ultimate static bending strength, min MPa	along the grain of face veneers	9-21	60
	against the grain of face veneers		30
Ultimate tensile strength along the grain, min MPa		6-8	30
Static bending elasticity modulus, min MPa	along the grain	9-21	6000
	against grain		3000

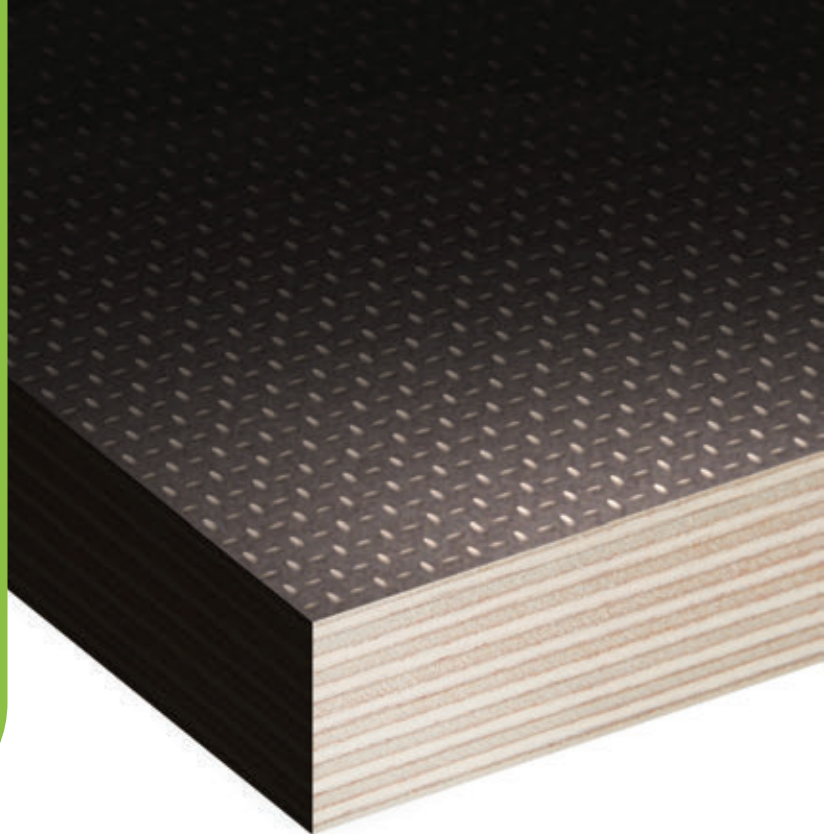
* Due to no need for pre-work, which amounts to 70% of painting time. Confirmed during an experiment with a playground manufacturer, Moscow, 2017.

** UV resistance.

*** For STO 52654419-006-2018 visit "Certificates" section of www.sveza.com website.

SVEZA TITAN

SVEZA Titan is a high-quality, 100% birch plywood with special abrasive coating, that provides human safety, the preservation of goods and durability of flooring in commercial vehicles. SVEZA Titan is coated with a unique film containing corundum particles, which allow exceptional anti-slip properties and wear resistance. SVEZA Titan has the highest level of durability and is also resistant to the loading of roller wheels.



KEY BENEFITS

- 01 **100% birch plywood**
- 02 **High wear resistance**
- 03 **Maximum slip resistance (R13)**
- 04 **Moisture protection of the edges**
- 05 **WBP glue**

TECHNICAL SPECIFICATIONS

Standard sizes, length x width, mm (ft)	2440x1220x2440/2500x1250x2500 (8x4x8) 1500x3000/1525x3050 (5x10)
Thickness, mm	6-30 (thickness up to 40 mm available upon client request)
Surface type	Wiremesh/smooth (W/F)
Wear resistance (according to EN 438-2:2016 (taber-test)), more than, rotations	2600
Rolling test (according to SFS 3939 (rolling-test)), not less, cycles	10000
Slip resistance (according to DIN 51130 (ramp-test))	R13
Surface color (film density)	Black (125 g/m ²) Dark brown (120 g/m ²)
Formaldehyde emission class	E1
Glue type	Exterior (WBP)
Density, kg/m³	640-700
Moisture content, %	5-14
Edge sealing	Painted on request
Produced under STO 52654419-006-2018 FILM FACED BIRCH PLYWOOD Technical Specifications.*	

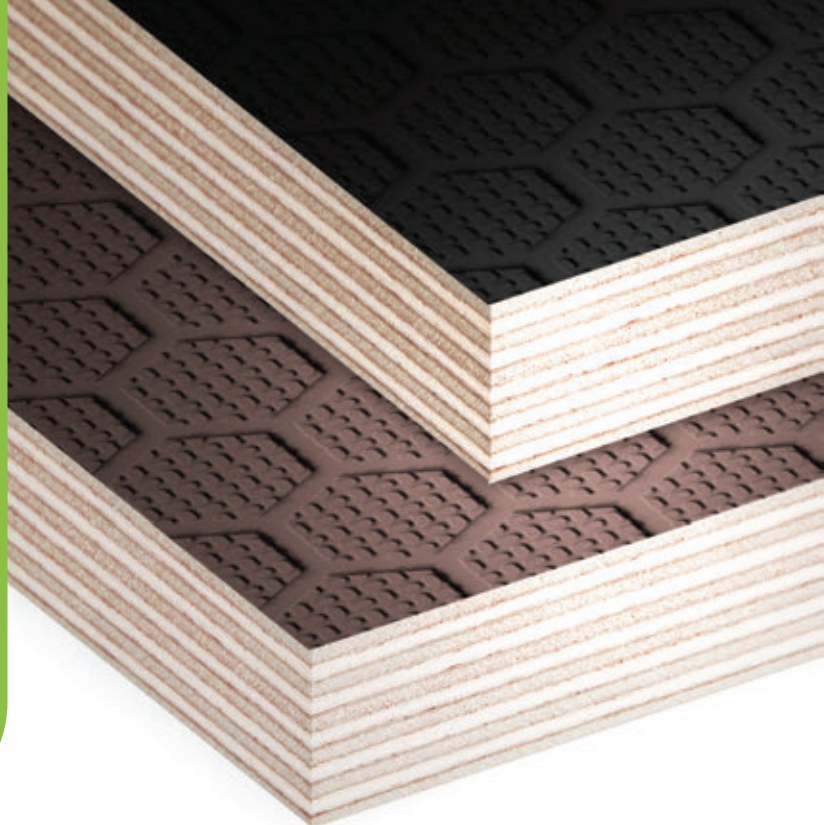
STRENGTH SPECIFICATIONS

DIMENSION		THICKNESS, MM	VALUE
Ultimate static bending strength, min MPa	along the grain of face veneers	9-30	60
	against the grain of face veneers		30
Ultimate tensile strength along the grain, min MPa		3-8	30
Static bending elasticity modulus, min MPa	along the grain	9-30	6000
	against grain		3000

* For STO 52654419-006-2018 visit "Certificates" section of www.sveza.com website.

SVEZA HEXA

SVEZA Hexa is a 100% birch plywood coated with film imprinted with hexagonal pattern for flooring in light commercial vehicles and other applications where slip resistance, easy care and decorative flooring are needed.



KEY BENEFITS

- 01 **100% birch plywood**
- 02 **High wear resistance (350-600 rotations according to EN 438-2:2016)**
- 03 **High slip resistance (R10)**
- 04 **Easy care**
- 05 **Choice of color**

TECHNICAL SPECIFICATIONS

Standard sizes, length x width, mm (ft)	1500x3000/1525x3050 (5x10)
Thickness, mm	12-30 (thickness up to 40 mm available upon client request)
Surface type	Hexa/smooth (H/F)
Wear resistance (according to EN 438-2:2016 (taber-test)), rotations	350-600
Slip resistance (according to DIN 51130 (ramp-test))	R10
Surface color (film density)	Dark Brown (220 g/m ²) Black (220 g/m ²) Light Grey (220 g/m ²) Stone Grey (174 g/m ²)
Formaldehyde emission class	E1
Glue type	Exterior (WBP)
Density, kg/m ³	640-700
Moisture content, %	5-14
Produced under STO 52654419-006-2018 FILM FACED BIRCH PLYWOOD Technical Specifications.*	

STRENGTH SPECIFICATIONS

DIMENSION	THICKNESS, MM	VALUE
Static bending strength, n/mm ² , not less	along the outer layer grain	60
	across the outer layer grain	30
Modulus of elasticity in static bending, n/mm ² , not less	12-30 along the grain	6000
	across the grain	3000

* For STO 52654419-006-2018 visit "Certificates" section of www.sveza.com website.

SVEZA PARQUET

SVEZA Parquet is a 100% birch plywood that meets the key requirements of engineered flooring manufacturers. SVEZA Parquet Standard allows the parquet manufacturer to minimize production costs, and provides stability to engineered constructions. SVEZA Parquet Premium superior bonding strength (internal bond strength test results ≥ 1.75 MPa) is achieved by using only solid veneers with minimum defects for both outer and inner layers.



KEY BENEFITS

- 01 **100% birch plywood**
- 02 **Thickness tolerance ± 0.2 mm**
- 03 **Moisture content 5-9%**
- 04 **Film packaging**
- 05 **WBP glue**
- 06 **Superior bonding strength (SVEZA Parquet Premium)**
- 07 **Solid veneers for outer and inner layers (SVEZA Parquet Premium)**

TECHNICAL SPECIFICATIONS

Standard sizes, length x width, mm (ft)	1220x2440/1250x2500 (4x8) 2440x1220/2500x1250 (8x4) 1525x1525 (5x5)
Thickness, mm	6-21
Face veneer grades	PST CP/CP, PST CP/C, PPR BB/BB, PPR BB/CP, PPR CP/CP
Surface type	Sanded/sanded (S2S)
Formaldehyde emission class	E1
Glue type	Exterior (WBP)
Density, kg/m ³	640-700
Moisture content, %	5-9
Produced under STO 52654419-002-2018 BIRCH PLYWOOD SVEZA PARQUET Technical specifications.*	

STRENGTH SPECIFICATIONS

DIMENSION	THICKNESS, MM	VALUE
SVEZA Parquet Premium Tensile strength perpendicular to surface (Internal bonding strength), MPa, not less		1,75
SVEZA Parquet Standard Tensile strength perpendicular to surface (Internal bonding strength), MPa, not less	6-15	—
Shear strength of the bonding layer, N/mm², not less		1
Static bending strength, N/mm², not less	along the outer layer grain	60
	across the outer layer grain	30
Modulus of elasticity in static bending, N/mm², not less	along the grain	6000
	across the grain	3000

* For STO 52654419-002-2018 visit "Certificates" section of www.sveza.com website.

SVEZA LASER

100% birch plywood developed specially for diemakers, that meets the key requirements of the industry. SVEZA Laser Standard is laser compatible and has consistently flat panels. SVEZA Laser Premium uniform face color and minimum defects the core veneers for diemakers who require highest quality.



KEY BENEFITS

- 01 **100% birch plywood**
- 02 **Consistently flat panel**
- 03 **Minimum defects in core veneers (SVEZA Laser Premium)**
- 04 **High quality face veneer (SVEZA Laser Premium)**
- 05 **Tight thickness tolerance**
- 06 **Laser compatible**

TECHNICAL SPECIFICATIONS

Standard sizes, length x width, mm (ft)	1525x1525 (5x5) 1220x1525 (4x5)/1250x1525 (4x5) 1 525x1250 (5x4)/1525x1250 (5x4)
Thickness, mm	3-30 (special thicknesses available upon customer's request)
Face veneer grades	LST B/B, LST B/BB, LST BB/BB, LST BB/CP, LPR B/B, LPR B/BB, LPR BB/BB
Formaldehyde emission class	E1
Glue type	Interior light glue (INT)
Density, kg/m ³	640-700
Moisture content, %	≤ 10

Produced under STO 52654419-003-2018 BIRCH PLYWOOD SVEZA LASER Technical Specifications.*

STRENGTH SPECIFICATIONS

DIMENSION	THICKNESS, MM	VALUE
Ultimate static bending strength, min MPa	along the grain of face veneers	45
	against the grain of face veneers	30
Ultimate tensile strength along the grain, min MPa	3-8	30
Static bending elasticity modulus, min MPa	along the grain	5000
	against grain	3000

* For STO 52654419-003-2018 visit "Certificates" section of www.sveza.com website.

SVEZA TOY

SVEZA Toy is a 100% birch plywood that ensures the safety of toys and childhood furniture. SVEZA Toy meets international safety standards, and makes both toys and childhood furniture visually attractive and natural. High-grade SVEZA Toy veneer is easy to process and ready for sanding and coating.



KEY BENEFITS

- 01 **100% birch veneer**
- 02 **High grades, pleasant, natural wood texture**
- 03 **High thickness tolerance**
- 04 **Safe material (CARB ULEF*)**
- 05 **Face veneer ≥ 0.7 mm ideal for sanding and coating**

TECHNICAL SPECIFICATIONS

Standard sizes, length x width, mm (ft)	1525x1525 (5x5) 1220x1525 (4x5)/1250x1525 (4x5) 1525x1250 (5x4)/1525x1250 (5x4)
Thickness, mm	3-30 (special thicknesses available upon customer's request)
Face veneer grades	T B/B, T B/BB, T BB/BB, T B/CP, T BB/CP, T CP/CP
Formaldehyde emission class	E1, CARB ULEF
Glue type	Interior light glue (INT)
Density, kg/m ³	640-700
Moisture content, %	≤ 10
Produced under STO 52654419-005-2018 SVEZA TOY BIRCH PLYWOOD Technical Specifications.**	

STRENGTH SPECIFICATIONS

DIMENSION		THICKNESS, MM	VALUE
Ultimate static bending strength, min MPa	along the grain of face veneers	9-30	45
	against the grain of face veneers		30
Ultimate tensile strength along the grain, min MPa		3-8	30
Static bending elasticity modulus, min MPa	along the grain	9-30	5000
	against grain		3000

* CARB ATCM § 93120.3 (d) (ULEF) directive for SVEZA veneer of FK grade.

** For STO 52654419-005-2018 visit "Certificates" section of www.sveza.com website.

SVEZA DRAWER

SVEZA Drawer is 100% birch plywood, specially developed for drawers and other furniture Component production that involves cutting with circular saws, milling and machining the edges. Additional control of the bonding strength makes it ideal for creating dove-tail joints. Thicker face veneers ensure the best surface for sanding and coating. SVEZA Drawer ensures the most natural surface look.



KEY BENEFITS

- 01 **100% birch veneer**
- 02 **Oval patch**
- 03 **Bonding strength**
- 04 **Face veneer ≥ 0.7 mm**
- 05 **Thickness tolerance ± 0.3 mm**
- 06 **Best face up, one direction stack**

TECHNICAL SPECIFICATIONS

Standard sizes, length x width, mm (ft)	1525x1525 (5x5) 1220x1525 (4x5)/1250x1525 (4x5) 1525x1250 (5x4)/1525x1250 (5x4)
Thickness, mm	3-25
Face veneer grades	DR B/B, DR B/BB, DR BB/BB, DR B/CP, DR BB/CP, DR CP/CP
Formaldehyde emission class	E1
Glue type	Interior light glue (INT)
Density, kg/m ³	640-700
Moisture content, %	≤ 10
Produced under STO 52654419-004-2018 SVEZA DRAWER BIRCH PLYWOOD Technical Specifications.*	

STRENGTH SPECIFICATIONS

DIMENSION	THICKNESS, MM	VALUE
Ultimate static bending strength, min MPa	along the grain of face veneers	45
	against the grain of face veneers	30
Ultimate tensile strength along the grain, min MPa	5-8	30
Static bending elasticity modulus, min MPa	along the grain	5000
	against grain	3000

* For STO 52654419-004-2018 visit "Certificates" section of www.sveza.com website.

SVEZA GAS

SVEZA Gas NO96 is a high quality 100% birch plywood to be used in NO96, NO96 L03 & L03+ and Mark III cargo containment systems designed by GTT for LNG transportation and storage.



KEY BENEFITS

- 01 Certified by GTT. 100% birch plywood
- 02 Certifies by DNV, ABS, Lloyd's, Bureau Veritas
- 03 Enhanced quality control at every stage of production
- 04 Superior strength characteristics
- 05 Any size from A4 format to 1525x3050 mm
- 06 Delivery on time

TECHNICAL SPECIFICATIONS

Standard sizes, length x width	Any size from A4 format to 1525x3050 mm
Thickness, mm	6,5 – 92
Face veneer grades	BB/BB, BB/WG и WG/WG

THICKNESS CHARACTERISTICS SVEZA GAS MARK III certified M3010 (Mark III system)

DIMENSION	THICKNESS, MM	VALUE
Ultimate strength in shearing through adhesive layer, MPa (in original condition and after 3 thermal shocks), average, MPa	6,5, 9, 12, 15, 21, 30	≥3,5
	24, 35, 92	≥2,5
Ultimate strength in shearing through adhesive layer, MPa (after boiling), average, MPa	6,5, 9, 12, 15, 21, 30, 24, 35, 92	≥1,4
Static bending strength, MPa	Lengthwise and crosswise	12, 18 ≥30
	Lengthwise	30 58
	Crosswise	30 50
The limit of the tensile strength, average, MPa	Lengthwise and crosswise	6,5 40
	Lengthwise	9, 12, 15 60
	Crosswise	9, 12, 15 40

THICKNESS CHARACTERISTICS SVEZA GAS NO96 и NO96 L03 & L03 certified M3502 (NO96) and M3513 (NO96 L03 & L03+)

DIMENSION	THICKNESS, MM	VALUE
Ultimate strength in shearing through adhesive layer, MPa	NO96	6,5-35 ≥1
	NO96 L03	35-42 ≥1
Static bending strength, average, MPa	Crosswise	6,5-35 ≥50
		6,5-9 ≥80
	NO96 Lengthwise	12 ≥75
		15 ≥70
Compressive strength parallel to the bonding plane, MPa	NO96 L03	21 ≥65
		24 ≥61
		30 ≥58
Compressive strength parallel to the bonding plane, MPa	NO96 L03	35 ≥56
		35-42 ≥28

APPLICATION

BUILDING

Slab Formwork

Plywood: SVEZA Deck 350, SVEZA Oil

Size: 4x8

Thickness: 18, 21

Surface: F/F

Vertical Formwork

Plywood: Film Faced

Size: 5x10

Thickness: 18, 21, 24

Surface: F/F

Concrete Slab Production

Plywood: Film Faced

Size: 4x8, 5x10

Thickness: 12, 18, 24

Surface: F/F

Scaffolding

Plywood: Exterior, Film Faced

Size: 4x8, 5x10

Thickness: 12, 15, 18

Grade: CP/C

Surface: F/W

Industrial Flooring (stairs, tribunes, bridges)

Plywood: SVEZA Titan

Size: 4x8, 5x8, 5x10

Thickness: 6-40

Surface: F/W

Farms and Farm Structures

Plywood: SVEZA Color Yellow

Size: 5x10

Thickness: 6-21

Surface: F/F (walls)





APPLICATION TRANSPORT

Trailer&Semi-trailer

Plywood: Film Faced, SVEZA Titan
Size: 4x8, 5x10, 5x8
Thickness: 24, 27, 30, 35
Surface: F/W (flooring)

Goods Vans

Plywood: Exterior, Film Faced, SVEZA Titan
Size: 4x8, 5x10, 5x8
Thickness: 9, 12, 15, 18, 21, 24, 27
Grade: BB/BB, BB/CP, CP/CP (walls, doors)
Surface: F/W (flooring), F/F (walls, doors)

Light Commercial Vehicles

Plywood: Exterior, Film Faced,
SVEZA Color Light Grey, SVEZA Hexa
Size: 4x8, 5x10, 5x8
Thickness: 4, 5, 6, 9, 12, 15, 18
Grade: BB/BB, BB/CP, CP/CP (walls, doors)
Surface: F/W (flooring), F/F (walls)

Buses

Plywood: Exterior, Film Faced
Size: 5x10, 4x8
Thickness: 9, 12, 15, 18
Grade: CP/C (flooring)
Surface: F/F (walls), F/W (flooring)



APPLICATION PACKAGING

Plywood: Exterior, Interior
Size: 5x5, 4x8, 5x10
Thickness: 6-21
Grade: CP/C, C/C



APPLICATION FURNITURE AND INTERIORS

Plywood: Exterior, Interior, SVEZA Toy, SVEZA Drawer,
SVEZA Paint, SVEZA Color
Size: 5x5, 4x8, 8x4, 5x10
Thickness: 3-30
Grade: B/BB, S/BB, BB/BB, BB/CP, CP/C, C/C



APPLICATION

LASER CUTTING

Plywood: SVEZA Laser
Size: 5x5, 4x5
Thickness: 3-30
Grade: LST B/B, LST B/BB, LST BB/BB, LST BB/CP
LPR B/B, LPR B/BB, LPR BB/BB



APPLICATION

LNG CONTAINMENT SYSTEMS

Plywood: SVEZA Gas
Size: any size from A4 format to 1525x3050 mm
Thickness: SVEZA GAS NO96 (incl. NO96 L03/L03+):
6, 5, 9, 12, 15, 21, 24, 30, 35, 37, 42
SVEZA GAS Mark III: 9, 12, 15, 18, 24, 35, 92
Grade: BB/BB, BB/WG и WG/WG



APPLICATION ENGINEERED FLOORING

Plywood: Exterior, SVEZA Parquet
Size: 4x8, 5x8
Thickness: 5,9 - 21
Grade: PST CP/CP, PST CP/C
PPR BB/BB, PPR BB/CP, PPR CP/CP



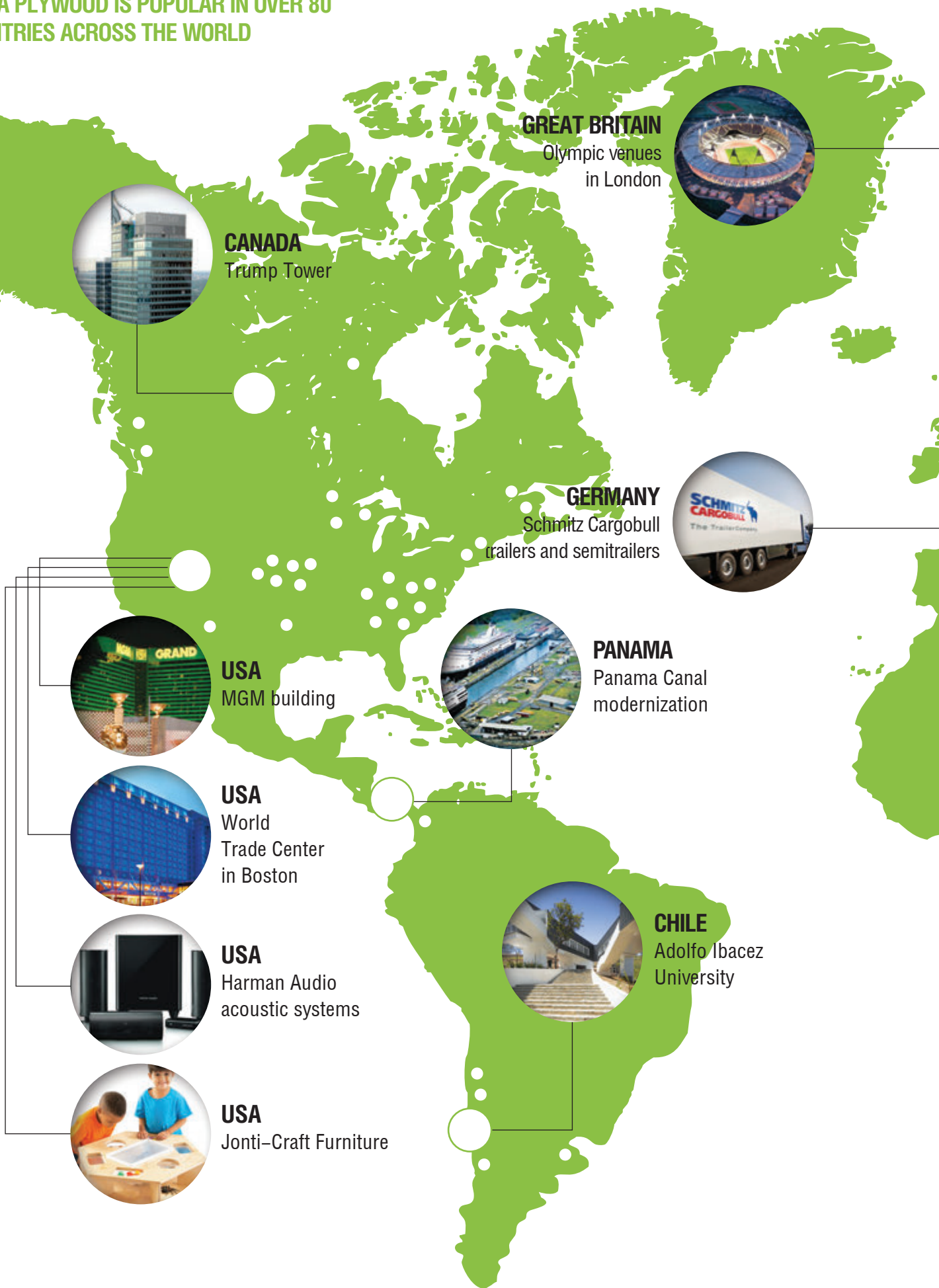
APPLICATION

TOYS AND CHILDREN'S FURNITURE

Plywood: Interior, Exterior, Film Faced,
SVEZA Toy, SVEZA Color
Size: 5x5, 4x8
Thickness: 3, 4, 6, 9, 12, 15, 18
Grade: T B/B, T B/BB, T BB/BB, T B/CP, T BB/CP, T CP/CP
Surface: F/F, F/W

SVEZA AROUND THE WORLD

SVEZA PLYWOOD IS POPULAR IN OVER 80 COUNTRIES ACROSS THE WORLD



CANADA
Trump Tower



GREAT BRITAIN
Olympic venues
in London



GERMANY
Schmitz Cargobull
trailers and semitrailers



USA
MGM building



PANAMA
Panama Canal
modernization



USA
World
Trade Center
in Boston



USA
Harman Audio
acoustic systems



CHILE
Adolfo Ibáñez
University



USA
Jonti-Craft Furniture



SWEDEN
Nefab industrial packaging



RUSSIA
Sochi 2014 Olympic venues



RUSSIA
Moscow City Business Center



RUSSIA
ST Nizhegorodets light commercial vehicles



KUWAIT
Al Hamra Tower



OMAN
Royal Opera Theater



ITALY
Listone Giordano flooring



ITALY
Bellotti high-speed trains



CHINA
HAPE toys for IKEA



KOREA
Daeboong furniture



SOUTH AFRICA
FIFA 2010 World Cup venues

TECHNICAL INFO

NUMBER OF SHEETS AND CRATE VOLUME

Nominal thickness of plywood, mm	CRATE HEIGHT, MM	
	400	600
3	130	200
4	100	150
5	80	120
6	65	100
6,5	62	92
8	50	75
9	44	67
10	40	60
12	33	50
15	26	40
18	22	33
21	19	29
24	16	25
27	14	22
30	12	20
35	11	17
40	10	15

TOLERANCES

Nominal thickness, mm	Number of plies	SANDED PLYWOOD		UNSANDED PLYWOOD	
		Tolerance, mm	Max difference in measurements, mm	Tolerance, mm	Max difference in measurements, mm
3	3	+0,3; -0,4		+0,4; -0,3	0,6
4	3	+0,3; -0,5		+0,8; -0,4	
5	4/5	+0,4; -0,5		+0,8; -0,4	
6	5	+0,4; -0,5		+0,9; -0,4	
6,5	5	+0,4; -0,5		+0,9; -0,4	
8	6/7	+0,4; -0,5		+1,0; -0,5	1,0
9	7	+0,4; -0,6	0,6	+1,0; -0,5	
10	7/8	+0,5; -0,6		+1,0; -0,5	
12	9	+0,5; -0,7		+1,1; -0,6	
15	11	+0,6; -0,8		+1,2; -0,7	
18	13	+0,7; -0,9		+1,3; -0,8	
21	15	0,0; -1,1		+1,0; -1,1	1,5
24	17	0,0; -1,5		+1,0; -1,5	
27	19	0,0; -1,8		+1,5; -1,8	
30	21	0,0; -2,0	1,0	+1,6; -2,0	2,0
35	25	0,0; -2,0		+1,6; -2,0	
40	28/29	+1,2; -1,2		+1,6; -2,0	

Plywood with other thicknesses, sizes, number of plies and tolerances are available by special order.

SIZE TOLERANCES

Length or width of plywood sheets, mm	Tolerance, mm
1220, 1250	±3,0
1500, 1525	±4,0
2440, 2500	±4,0
3000, 3050	±5,0

Other sizes are available by special order. Length of plywood panels is defined along the grain of outer layers.

TRANSPORT LOADING CAPACITY

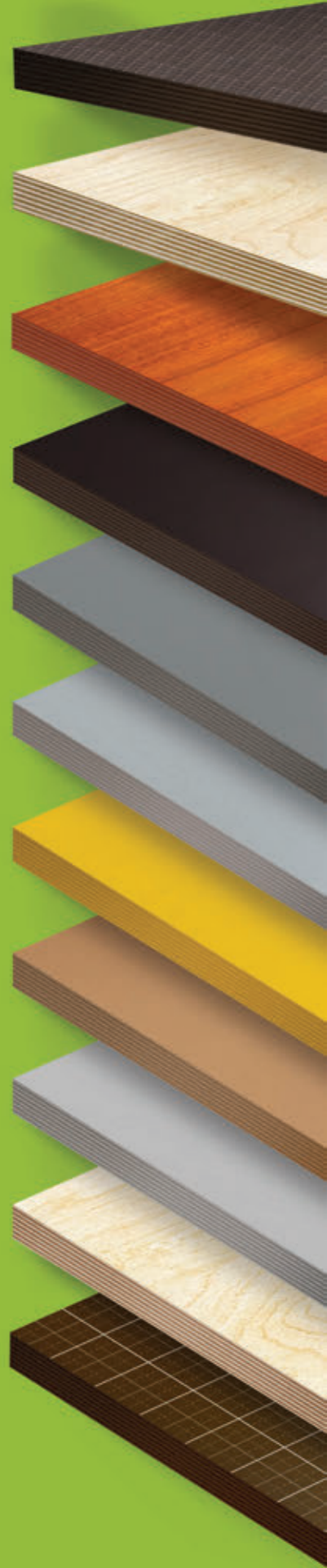
Size, ft	Crate height, mm	Quantity of crates	CONTAINER		TRUCK		RAILCAR (138 M ³)	
			Volume, m ³	Quantity of crates	Volume, m ³	Quantity of crates	Volume, m ³	Quantity of crates
5x5	400	40	36-37	32	30	62-82	58-75	
4x8x4 (1250x2500x1250 MM) Exterior Plywood	400	29-30	36-37	24	30	60-74	75-92	
	600	—	—	16	30	45	84	
4x8x4 (1220x2440x1220 MM) Exterior Plywood	400	30-31	36-37	25	30	60-74	71-88	
	600	—	—	16	30	45	80	
4x8x4 (1250x2500x1250 MM) Film Faced Plywood	400	28-29	35-36,5	23-24	29-30	60-74	75-92	
	600	—	—	16	30	45	84	
4x8x4 (1220x2440x1220 MM) Film Faced Plywood	400	29-30	35-36	24	29	60-74	71-88	
	600	—	—	16	29	45	80	
5x8x5	400	25	38	20	30	48	70	
	600	—	—	13	30	—	—	
5x10	400	19	35	16	30	34	60	
	600	—	—	11	30	—	—	

The actual loading capacity standards can differ from the basic standards, depending on the terms agreed upon with the client.

DISTANCE FROM THE SVEZA MILLS TO MOSCOW

Plywood mill	Distance, km
SVEZA Ust-Izhora, St. Petersburg	685
SVEZA Kostroma, Kostroma	412
SVEZA Novator, Vologda region	1024
SVEZA Uralskiy, Perm territory	1411
SVEZA Manturovo, Kostroma region	671
SVEZA Verhnaya Sinyachiha, Sverdlovsk region	1474
SVEZA Tyumen	1710





The world leader in birch plywood
production

WWW.SVEZA.COM

JUNE 2019